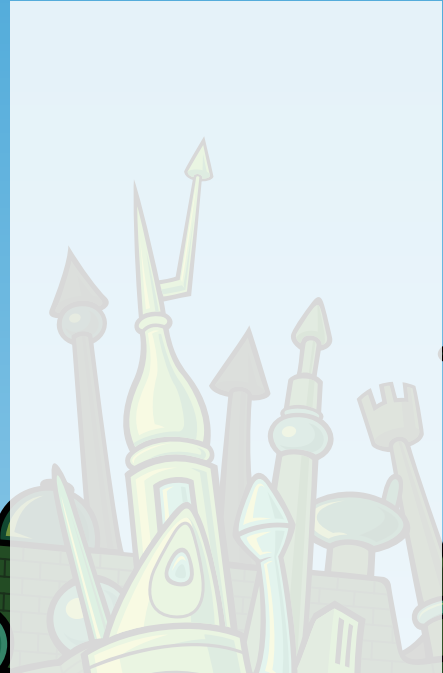


DRAW

DISCARD



# FLUXX

## HOW TO PLAY

Deal 3 cards to each person

### ON YOUR TURN:

1. Draw the number of cards currently required
2. Play the number of cards currently required
3. Discard down to the current Hand Limit (if any)
4. Comply with the current Keeper Limit (if any)

### WINNING:

The game ends when a player has the keepers in play that match the current goal. That player is the winner.

### FLUXX BASIC RULES

To begin, shuffle up the deck and deal 3 cards to each player. Choose someone to go first. Keep this card on the table.

DRAW 1 *	1	DRAW 1 *	1
<b>Draw 1</b>	<b>Play 1</b>	<b>Draw 1</b>	<b>Play 1</b>
Draw 1 card per turn.	Play 1 card per turn.	Draw 1 card per turn.	Play 1 card per turn.

PLAYER 1 KEEPERS

PLAYER 3 KEEPERS

GOALS

RULES

PLAYER 2 KEEPERS

